

It is one of the works that stem from my experiences in the Swiss Alps in 2013, where my aspiration for tangibility of life was evoked, and instinctive and casual actions preceded reflection or conceptualisation.

One evening, I was standing in the landscape looking at the stars. A strong wind blew. I heard low-pitched sound and felt the vibration through a beer bottle I had in my hand.

I made a series of four acts to stand up in the Appenzeller landscape with beer or wine bottle, attempting to capture the wind to make them “whistle”. Then I asked a local meteorologist to depict the winds of the place at that moment of my acts, according to their official record.

LIVE REENACTMENT OF THE WINDS In the installation, four images are presented one after another, fading in and out in a slow rhythm with a projector. Three images are what I took at the site before/after my act, and one image of my act taken by another artist in the same residence. The projector stands near the wall and the images are projected on a sheet of A4 paper, of which top corners are fixed to the wall. It sways with the breeze coming from the ventilation of the projector and the movement of the audience.

TRANSCRIBING THE MOVEMENTS Both the caption to describe the intent and concept of the acts and the description of the wind from the meteorologist are presented on the wall, printed on respective sheet of paper and placed on the clipboard.

IMPROVISATORY AESTHETIC All the installation materials, such as paper, clipboard and straws (placed to direct the ventilation towards the paper on the wall) are found at the exhibition site, reflecting the manner how the acts were originally carried out - spontaneously and using only the things around.

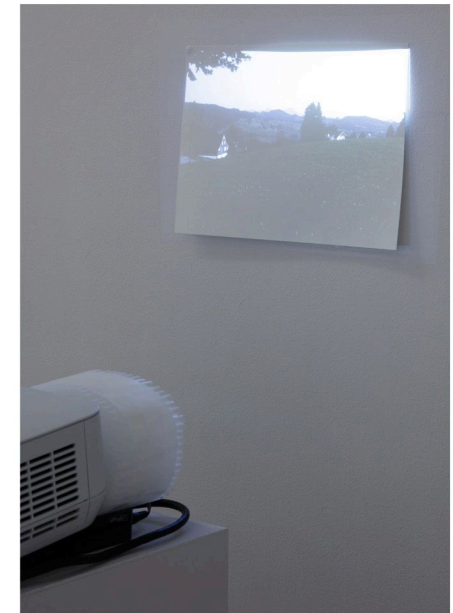
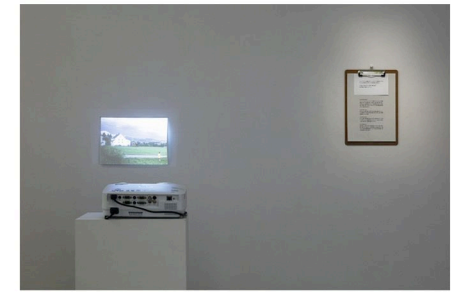
« wind description from the local meteorologist »

On Thursday 18 July 2013, we had in Wald/AR at first northerly winds with 20-40km/h, turning to west/southwest at 19h00, gusts up to 35km/h at 19h30: After 20h20 local time wind from south to southeast with gusts up to 48km/h between 21 and 22.

On Saturday 27 July 2013: again wind from north to northeast till 21h00 with gusts up to 20km/h. Then southeasterly to southerly wind with max of 54km/h around 23h30 local time.

On Friday 2 August 2013, northerly wind of the evening turned at 21h local time to east, later southeast, with gusts of 20.30km/h between 22h00 and midnight. From 23h30 on wind turned to more southerly direction with 10 to 20 km/h.

Tuesday 6 August 2013 had more wind: till 19h15 from west/northwest with 10 to 28 km/h. With a cold front gusty westerly wind from 19h30 to 21h00, up to 119km/h at 19h35. After 21h local time mountain breeze from southeast to south.

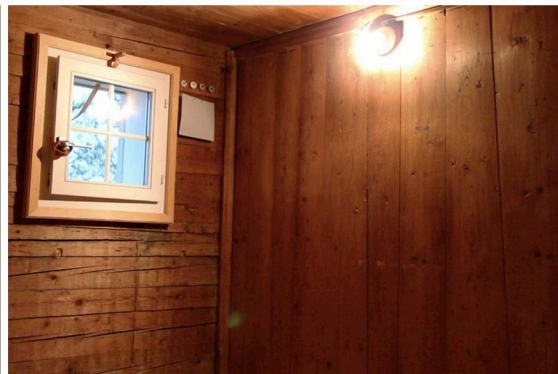
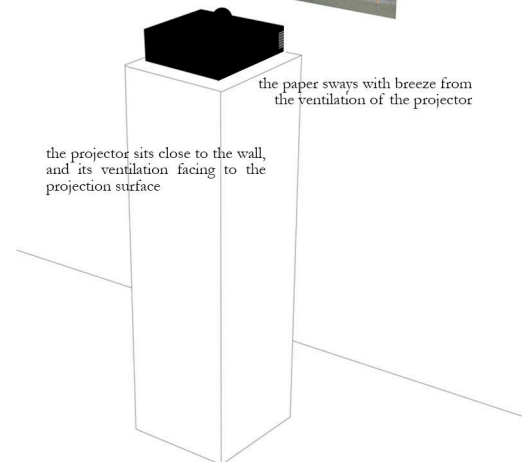


the projection is on a sheet of paper fastened its top corners to the wall with Bluetack.



the paper sways with breeze from the ventilation of the projector

the projector sits close to the wall, and its ventilation facing to the projection surface



(left page, from upper left to lower right) images for slide show (right page, from top to bottom) an installation view; detail showing the ventilation with straws and the swaying projected image; an illustration of the installation structure

Wind Ensemble (in four movements)

2013-2015

act / installation (glass bottles / projector, straws, paper, clipboard)

location of act: Wald, Appenzell, Switzerland



TUESDAY 30 JULY 2013

Hi,

I am a Japanese artist who is invited to take part in the festival to celebrate 500 years anniversary of Appenzell cantons joining the Swiss Confederation.

For my project, I would like to know the wind speed in Wald (AR) in the evening of 18 July 2013 and 27 July 2013. (I could not figure out how I can see the record, instead of forecasts on the website.) The information I need about the wind would be used for my works that are presented at Ledi Oberegg in September.

I appreciate to hear from you at your earliest convenience.

Best regards,

Mako Ishizuka

TUESDAY 30 JULY 2013

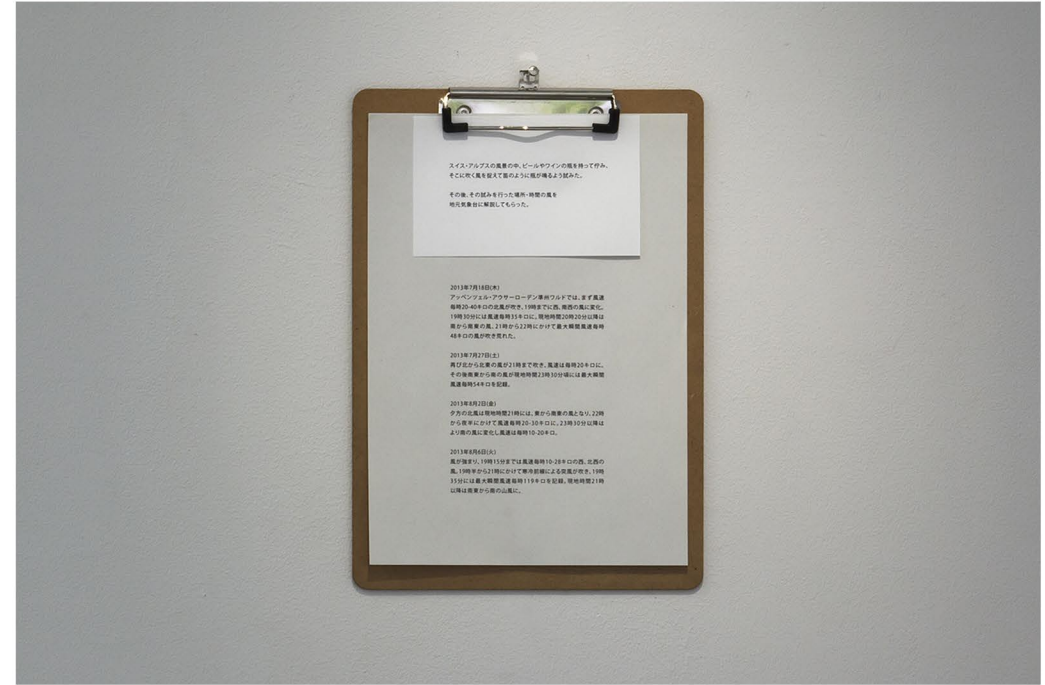
Hi Mako,

Thank you for the mail! On Thursday, 18/07/2013 we had in Wald/AR at first northerly winds with 20-40 km/h...turning to west/southwest at ~19h00... gusts up to 35 km/h at 19h30: After 20h20 local time wind from south to southeast with gusts up to 48 km/h between 21 and 22.

On Saturday, 27/07/2013: again wind from north to northeast til 21h00 with gusts up to 20 km/h. Then southeasterly to southerly wind with max. of 54 km/h around 23h30 local time.

Best regards,

Joachim Schug



WEDNESDAY 4 SEPTEMBER 2013

Hi Joachim,

I would like to know the wind speed in Wald (AR) in the evening of 2 August, and also 6 August (including early evening around 18h-19h) for the same reason as last time, for the art project for ARAI500.

I am happy to hear from you soon!

Best regards,

Mako

THURSDAY 5 SEPTEMBER 2013

Hi Mako

In Wald/AR we had on 2nd of August till 18h local time local thermal winds from west to northwest with 7 to 17 km/h. Afterwards wind from north to northeast with 4 to 10 km/h and a gust of 13 km/h at 18h40.

Tue, 6th of August had more wind: till 19h15 from west/ northwest with 10 to 28 km/h. With a cold front gusty westerly wind from 19h30 to 21h00...up to 119 km/h (!) at 19h35 After 21h local time mountain breeze from southeast to south.

Hope, this will help you

Regards

Joachim

(left page, top) installation view, showing the ventilation with straws and the swaying projected image
(right page, top) installation view, presenting the concept of my acts and the description of the winds
(bottom) the email exchanges with the local meteorologist